

FITC Anti-Human CD34 Antibody

Catalog Number:	107402, 107403
Size:	25 tests, 100 tests
Target Name:	CD34, Gp105-120, My10
Regulatory Status:	RUO

PRODUCT DETAILS

Clone:	581
Application:	Flow Cytometry
Reactivity:	Human
Format:	FITC
Isotype:	Mouse IgG1
Antibody Type:	Monoclonal
Formulation:	Phosphate-buffered solution, pH 7.2, containing 0.09% sodium azide and 0.2% (w/v) BSA
Protein Concentration:	Supplied at a lot-specific concentration.
Storage&Handling:	The antibody solution should be stored undiluted between 2°C and 8°C, and protected from prolonged exposure to light. Do not freeze.
Recommended Usage:	For flow cytometric staining, it is recommended to use 5 µL of this reagent per 0.5-1.0 million cells in a 100 µL volume. Optimal reagent performance should be determined by titration for each specific application. FITC has an excitation max at 493 nm and an emission max at 525 nm.
Excitation Laser:	Blue Laser (488 nm)
Isotype Control:	301415
RRID:	AB_3738777

BACKGROUND INFORMATION

CD34 is a transmembrane phosphoglycoprotein that functions as a key marker of hematopoietic stem and progenitor cells, endothelial cells, and some fibroblast subtypes. It plays a vital role in cell adhesion, migration, and the maintenance of stem cell niches within the bone marrow. CD34 is widely used in clinical and research settings as a surface antigen for identifying and isolating hematopoietic stem cells, which are essential for bone marrow transplantation and regenerative therapies.

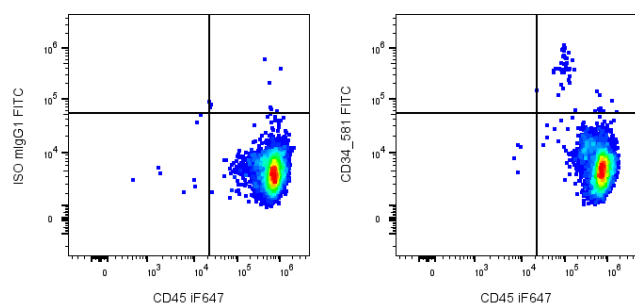
Structurally, CD34 is a single-pass transmembrane sialoglycoprotein of approximately 110 kDa, consisting of an extensively glycosylated extracellular domain, a single hydrophobic transmembrane segment, and a short cytoplasmic tail containing phosphorylation sites. The extracellular domain carries multiple O-linked and N-linked carbohydrate chains contributing to its highly negative charge, which is important for its anti-adhesive properties and interaction with other molecules. Although CD34 belongs to the sialomucin family, its precise molecular ligands have not been fully defined. It is known to interact with L-selectin and other adhesion molecules, particularly under vascular shear stress, facilitating leukocyte rolling and homing to lymphoid tissues or sites

of inflammation.

In the context of disease, CD34 expression and function are significant in several pathological conditions. In hematologic malignancies such as acute myeloid leukemia (AML), CD34 is often expressed on leukemic stem cells, where it serves as a diagnostic and prognostic marker. In solid tumors, its expression is associated with angiogenesis, as CD34 marks endothelial progenitors contributing to new vessel formation. Furthermore, its downregulation or loss may relate to fibrotic progression in certain chronic disorders.

Therapeutically, CD34 has become a cornerstone in stem cell-based interventions. CD34-positive cells are collected and transplanted to regenerate healthy hematopoietic and immune systems following chemotherapy or radiation therapy in cancer patients. Clinical trials are also exploring the use of CD34+ progenitor cells to promote vascular repair and tissue regeneration in ischemic heart disease, peripheral artery disease, and diabetic ulcers. Efforts to modulate CD34 expression or exploit CD34+ cells' regenerative capacity continue to shape the landscape of advanced cellular therapy and biotechnology.

PRODUCT DATA



Human peripheral blood leukocytes stained with iF647 Anti-human CD45 and either FITC Anti-Human CD34 clone 581 (right panel) or an isotype control (left panel).

This product is supplied subject to the terms and conditions at www.innocyto.com/web/terms.php and may only be used as provided in the stated terms. Products are for Research Use Only.